

One Person Presentations that challenge stereotypes of race, ethnicity, gender, ability and sexual orientation still prevalent in today's society.



“Quite possibly the best format for discussing issues related to diversity.”
Olympic College



CATCH THE SHOWS THAT HAVE CAPTURED THE COUNTRY!

“Simply outstanding and unparalleled! A rare, timely, carefully balanced and powerful message for all humankind.”
-Princeton University

“It was simply beautiful.”
-National Democratic League

“This was one of the most powerful, thought-provoking programs I have ever attended. It really speaks to the heart of America.”
-John Scherer & Associates

“I benefited ten-fold more from the 1-1/2 hour performance than all 8 hours of “formal” diversity training.”
-Sunnyside WA Police Department

FOR BOOKING INFORMATION CONTACT:

Will & Company • 5504 Tyrone Avenue • Sherman Oaks CA • 91401
818-437-1272 phone • 818-510-3371 fax • info@facesandvoices.com
www.facesandvoices.com



In these fascinating and moving true accounts of nine “All American” stories we get to see the real face of an American today. Here are the heartfelt beliefs of young Americans: African, Asian, Latino, East Indian, European and Native. They challenge the stereotypes of race, class and sexual orientation placed upon them by their previous generations and tell us of their hopes for the future.

A one-person play written entirely from research based upon interviews and workshops held across the country “Faces” has been described as the first truly multicultural portrayal of Americans ever created and “edutainment” at its best.

“Faces of America” premiered at the Los Angeles Theatre Center and was hailed by the Los Angeles Times as a ‘Best Bet’: “I saw this production in which nine characters were portrayed with beautiful clarity and intuitiveness...the audience I was in laughed and cried throughout the entire performance.” Creative team Colin Cox & Fran de Leon created “Faces of America” in response to demands for diversity workshops. Recognizing that their strengths lay in theatre, they began an intensive research of young Americans. After interviewing over 60 people, they began to formulate the characters depicted in this extraordinarily truthful and sometimes shocking portrayal of American society. Originally performed by co-creator Fran de Leon, “Faces” tours across the country with solo performances by several noted stage veterans.

Enjoying its sixth season, “Faces” has been honored by standing ovations across the country at large and small, public, private and community colleges and universities as well as for corporate and community events. Special engagements include the 51st & 52nd Annual United Nations Day. “Wonderfully insightful in its witty, tragic and joyous portrayal of human nature” (Our World, United Nations), “Faces” continues to tour the colleges and corporations of America, spawning discussion and debate at each stop.

Will & Company • 5504 Tyrone Avenue • Sherman Oaks CA • 91401
818-437-1272 phone • 818-510-3371 fax • info@facesandvoices.com
www.facesandvoices.com

AMERICAN VOICES

because it's time to hear

Following the great success of 'Faces of America' throughout the United States and in reaction to the post show discussions generated from these presentations, the producers of 'Faces' have created another series of stories that further portray the notion of an American in the 21st century.

"American Voices" speaks to the attitudes, beliefs and hopes of Americans in the face of a new millenium. Census 2000 revealed America to be more diverse than ever before. How are we coping? "American Voices" takes a look.



Like "Faces," "Voices" is a riveting one-person play of nine stories based upon the real lives and recollections of Americans. These are accounts of where diversity lives and breaths, its reality and where we all think it is going.

Not only does "Voices" address the concerns of ethnicity, it also challenges the issues of ability, sexual orientation, religion and socio-economics.

Will & Company • 5504 Tyrone Avenue • Sherman Oaks CA • 91401
818-437-1272 phone • 818-510-3371 fax • info@facesandvoices.com
www.facesandvoices.com

REVIEWS FROM ACROSS THE COUNTRY



“Your presentation was outstanding and very moving. You made an excellent impression on both the young and older audiences. “Faces of America” was the aspect of the Cultural Diversity Conference the participants liked the most. Thank you for your participation and for the valuable and inspiring presentation.”

Racial Justice Task Force, Salem OR

“The presentation was uniquely on target! Employess who witnessed this production were nearly unanimous in their assessment of the performance. The format was unique, the performance was riveting, supercharged, realistic and compelling. Many in our audience were moved to tears, but more importantly, all were moved to reassess their basic beliefs about others whose race, ethnicity or culture may be different from their own. Finally, the story and its presentation were remarkable in the way they openly discuss the stereotypes, contradictions, fears, and illusions about race which dog our society, but which when properly understood, set a framework for a future of better race relations.”

Social Security Admissions, Dallas TX

“I was incredibly moved by the performance. Thank you for enriching my life with “Faces of America”. What a wonderful way to celebrate United Nations Day! It was simply beautiful.”

National Democratic League

“This method of entertaining while educating reached our people in a new and meaningful way. This was evidenced during the presentation as I observed the audience laughing as they empathized, sighing as they sympathized, and crying as they realized how much we all share in common. An organization that pursues this new approach to enlightening our people will undoubtedly set a benchmark for others to emulate.”

Department of the Air Force, WA

“What a treat it was to host “Faces of America” at Suffolk University! It was a masterful portrayal of carefully chosen and well-crafted characters. In a true indication of the authenticity of the work, audience members of several racial and ethnic backgrounds spoke of the similarity between these portraits and the people they knew. The music, costumes and clever set all combined to reinforce a powerful message on embracing diversity. Congratulations for creating such a superb presentation.”

Suffolk University, Boston MA

“The sets were wonderful; artistic and flexible to the performance space. This is the second time we’ve had “Faces” and we look forward to booking it again!”

Grays Harbor College, Aberdeen WA

Reviews (cont. p2)

“The play was masterfully conceived, and Fran de Leon’s delivery and emotion kept the audience spellbound for the entire play. While there were many messages, the play was also entertaining, arousing and thought-provoking. A common comment among the students was “Can we bring this back next year?” Thank you for an excellent experience!”

Pennsylvania State University, Main Campus

“Let me reiterate my personal gratitude and admiration for what you are doing to promote good will amongst diverse people. The response to your play was overwhelmingly positive from students and faculty. One student emailed to thank me for a “most marvelous assembly”. You made them think about matters they had never thought about before.”

La Sierra University, CA

“This is the second time we have had “Faces” on campus and it was even more powerful and meaningful than the first time (just when I thought that it couldn’t be better!). We look forward to having it on our campus again the future.”

University of Alaska Fairbanks

“I have heard nothing but very positive comments from both students and faculty and many have asked when your production can return to our campus. The success of the Freshman Seminar Program depends largely on the success of its speakers and it has been said that your presentations was one of the best!”

Chapman University, CA

“Just as it did last year, “Faces” made students ponder, explore and re-evaluate their thoughts and opinions on their own identity, and that of others. Both the classroom residency and the post show discussion made a wonderful impression on the students and really brought into context the message of the play.”

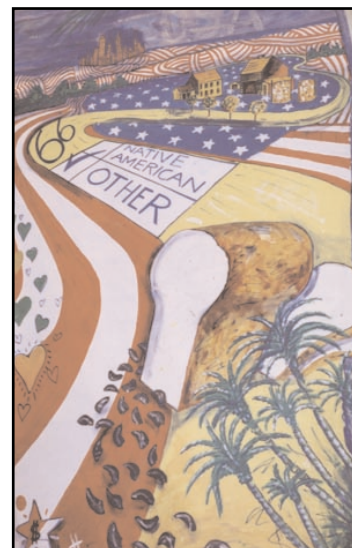
University of Puget Sound, WA

“The performance of “Faces of America” at Princeton University was simply outstanding and unparalleled. A rare, timely, carefully balanced and powerful life-enhancing message for all humankind. Fran de Leon’s spirit and playwright Colin Cox’s script captured the complexities of our contemporary society with deep sensitivity and objectivity. A wonderful conclusion to our orientation efforts addressing issues of diversity!”

Princeton University, NJ

“Virtually every comment and letter I have received since the event has been universal in its praise for “Faces”. Students, faculty, staff, and our off-campus audiences all commented on the high production values, the entertainment value, and the value of the performance’s message!”

University of Southern California



Reviews (cont. p3)

“We feel like we’re coming down from a “high”! Thank you for your wonderful presentation during convocation. Our students were spell-bound!”

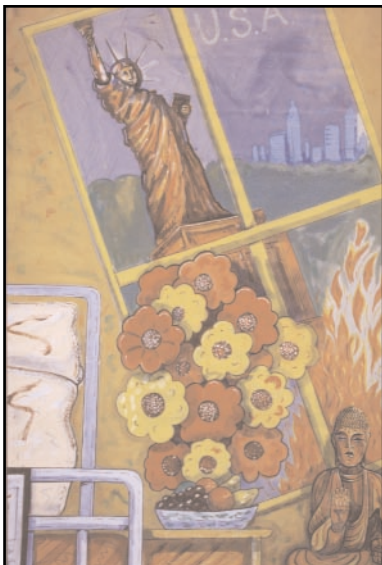
Southern Utah University

“Thank you for an outstanding performance! We believe your messages had a positive impact for those who attended. Your performance was so inspiring, we hope to invite you once again. The time you spent with the students before and after the performance was invaluable and cannot be duplicated.”

Lower Columbia College, WA

“I thoroughly enjoyed the performance of “Faces of America” at the Intercultural Retreat. I have had the pleasure of seeing it before and found it to be as equally exhilarating as the first time. I have heard nothing but rave reviews in response to the performance and the many cultural issues it addressed. “Faces of America” served as a powerful conclusion for the retreat. “

Pepperdine University, CA



“Great! Awesome! Some Show! Great acting and writing. Vasna Bilavarn gave an excellent performance. This type of program should and must be shown everywhere to educate the world.”

Florida Gulf Coast University

“I am still awestruck by last night’s performance of “Faces of America”! This was one of the most powerful, thought-provoking programs I have ever attended. It really speaks to the heart of America.”

John Scherer & Associates, WA

““Faces of America’ entertains as well as it educates. It engages one’s faculty of thinking as well as one’s emotions. This makes it equally suitable for those organizations that are just beginning their diversity programs, as well as a perfect enhancement for those that already have a program in place. I feel very privileged to have seen ‘Faces’;!”

Oregon Department of Revenue

““Faces of America’ is a production that people relate to. It is also an excellent tie-in to communications, literature, psychology, and orientation courses.”

Woodbury University, CA

“Jennie Kwan was awesome! Her characters were compelling. She and your technical staff worked with almost nothing and made a very enlightening and entertaining performance. I most appreciated the factual information provided. It was amazing to hear Ms. Kwan’s voice and entire demeanor change to become each of the characters.”

Sarah Lawrence College, NY

CLIENT LISTING BY STATE

ALASKA

University of Alaska, Anchorage
University of Alaska, Fairbanks
University of Alaska, Juneau

ALABAMA

Alabama State University
Spring Hill College

CALIFORNIA

California Lutheran University
California State Northridge
Cerritos College
Chapman University
Citrus Community College
Claremont University
California State Humboldt
Eureka High School
La Sierra University
Miracosta College
Mount St. Mary's College
Occidental College
Pepperdine University
Pomona College
San Diego Mesa College
San Jose State University
Santa Ana College
Social Security Administration
United Nations Association
University of CA Irvine
University of San Diego
University of Southern California
Whittier College
Woodbury University

COLORADO

Metropolitan State Coll of Denver
The Casey Family Program
University of Colorado at Denver

CONNECTICUT

Central Connecticut State

DISTRICT OF COLUMBIA

Association of American Colleges
& Universities

DELAWARE

DE Tech College Terry Campus
University of Delaware Newark

FLORIDA

Florida Gulf Coast University
Florida International University
Lee County School District
University of Miami
University of West Florida

GEORGIA

Coastal Georgia Comm. College

IOWA

Central College
Grinnell College

IDAHO

Boise State University
College of Southern Idaho
North Idaho College
University of Idaho Moscow
A.C.U.I. Region 14 Conference

ILLINOIS

Augustana College
Illinois Math & Science Academy
Knox College
Millikin University
Northern Illinois University
Northwestern University
Olive-Harvey College
Southern Illinois University
Springfield College in Illinois

INDIANA

DePauw University
Hanover College
Indiana State Univ. Terre Haute
Indiana University Kokomo
Purdue University Calumet
Saint Mary's College

KANSAS

Garden City Community College
University of Kansas, Kansas City
University of Kansas Lawrence

MASSACHUSETTS

Berkshire Community College
Bridgewater State College
Massasoit Community College
Newbury College
Suffolk University
Worcester College

MARYLAND

Hood College
Johns Hopkins University
Social Security Administration
Headquarters
Towson State University

MICHIGAN

Central Michigan University

MISSOURI

Northwest Missouri State

MISSISSIPPI

Millsaps College
Mississippi University for Women

MONTANA

Montana State University Bozeman
University of Montana Missoula

NEBRASKA

College of Saint Mary
Midland Lutheran College
Nebraska Wesleyan University

NEW JERSEY

Rowan University of New Jersey
Monmouth University
Princeton University
Stevens Intstitute of Technology
University of Medicine & Dentistry

NEW YORK

Colgate University
Columbia University
Cornell University
Finger Lakes Community College
Hamilton College
Hobart William Smith College
Jefferson Community College

CLIENT LISTING BY STATE (cont. p2)

NEW YORK (cont.)

Monroe Community College
Nassau Community College
Oneonta State College
Onondaga Community College
Pace University Pleasantville
Sarah Lawrence College
State University Institute of Tech
SUNY Purchase College
SUNY at Stonybrook
SUNY at Morrisville
Syracuse University
Westchester Community College

NORTH DAKOTA

Bismarck State College
North Dakota State Univ. Fargo
North Dakota University Systems
The Casey Family Program
University of North Dakota,
Grand Forks

OHIO

Miami University
Youngstown State University

OREGON

Central Oregon Comm. College
George Fox University
Lane Community College
Lewis & Clark College
Linfield College
Oregon State University Corvallis
Portland Comm. College, Sylvania
Portland Comm. College, Cascade
Portland Comm. College,
Rock Creek
Reed College
Salem Task Force
Salem/Keizer Public School
District
State of Oregon Dept. of Revenue
University of Oregon Eugene
University of Portland
Western Oregon State College
YWCA of Salem

PENNSYLVANIA

Albright College
Beaver College
Bucknell University
Clarion University of Pennsylvania
Community College of Allegheny
County
Comm. College of Philadelphia
Lebanon Valley College
Luzerne County Comm. College
PennState University Main Campus
Penn State University McKeesport
Thiel College
Univ of Pennsylvania, Philadelphia
University of Pittsburgh at
Greensburg

RHODE ISLAND

Brown University

SOUTH DAKOTA

South Dakota State University
Brookings

TEXAS

Abilene Christian University
Brookhaven College
Eastville College
Hardin Simmons University
Mountain View College
North Lake College
Richland College
Social Security Administration
Texas Tech University

UTAH

Southern Utah University

VIRGINIA

College of William & Mary
Lynchburg College
Virginia State University

WASHINGTON

Big Bend Community College
Clover Park Technical College
Columbia Basin College
Edmonds Community College

WASHINGTON (cont.)

Everett Community College
Evergreen State College
Gonzaga University
Grays Harbor Community College
Green River Community College
Highline Community College
John Scherer & Associates
Lower Columbia College
McChord Airforce Base
MEAD Creative Learning Center
Metropolitan Financial
Multicultural Student Services
Directors Council
Olympic College
Pacific Lutheran University
Pierce College
Seattle Central Community College
Seattle University
South Puget Sound Comm. College
Spokane Community College
Spokane Falls Community College
Spokane Task Force
St. Martin's College
Tacoma Community College
University of Puget Sound
University of WA Seattle
University of WA Tacoma
Walla Walla College
Wenatchee Valley Comm. College
Western Washington University
Whitman College

WISCONSIN

Carroll College
Marquette University
Ripon College
University of WI Green Bay
University of WI Milwaukee
University of WI Parkside
University of WI Stevens Point
University of WI Stout
University of WI Menomonie

WEST VIRGINIA

Fairmont State College
MEAEOPP Conference
Salem-Teiko University

Logistics

The crew consists of the Performer and the Production Manager. They travel by air or by car depending on your location and schedule. With them, they carry the set, costumes and sound for the production. The set is constructed of PVC pipes and canvas panels and is collapsible to fit into two golf club cases, all of which can fit in a van or SUV.

The Production Manager will take care of all your technical needs and can deal directly with your venue's Technical Director.

After the show, the Performer will facilitate a post-show discussion upon your discretion. The Performer will also be available for photos after the show as there is no photography during the performance.

Technical Requirements

"Faces" and "Voices" are dramatic presentations and are ideally performed in theatres. However, with the adaptability of the set and the flexibility of our crew, it can be performed virtually anywhere. Below is a guideline of technical needs, which our Production Manager can easily reconfigure to your specific venue capabilities.

Space requirement: 30 ft wide, 20 ft deep, 11 ft high

CD Player with house system

Two (2) 6-8 foot ladders

One (1) music stand

One (1) armchair

2-4 Volunteers at set-up

Set-up time of 4 hours or more prior to curtain

For theatrical venues with a crew:

1 - 2 stage crew at set-up and performance

Sound Board Operator

Lighting Board Operator

- Basic lighting plot available prior to arrival